

# Grassland Conservation Reserve Program (CRP)

Grassland Signup 206 – June 3 - 28, 2024

## Overview

USDA Farm Service Agency's (FSA) grassland Conservation Reserve Program (CRP) is a voluntary program that contracts with agricultural producers to help landowners and operators protect grassland, including rangeland, pastureland, and certain other lands, while maintaining the areas as grazing lands. The program emphasizes support for grazing operations, plant and animal biodiversity, and eligible land containing shrubs and forbs under the greatest threat of conversion. CRP participants develop and implement conservation plans that work alongside their haying and grazing operations. In return, FSA provides participants with rental payments and cost share assistance. Contract duration is between 10 and 15 years. Accepted contacts for this grassland CRP signup period will become effective October 1, 2024.

## Submitting Grassland CRP Offers

Land not currently enrolled in CRP may be offered during this grassland CRP signup period. In addition, CRP producers whose CRP contracts are expiring on Sept. 30, 2024, may offer the expiring land in grassland CRP signup 206. To submit grassland CRP offers, producers must contact their local FSA Office. FSA will accept grassland CRP offers only during the signup period.

## What Land is Eligible?

To be eligible for grassland CRP, land must have an established cover containing forbs or shrubs, be located in an area historically dominated by grassland, provides habitat for

animal and plant populations of significant ecological value, or is expiring CRP. Offered Land with more than 5% tree canopy is ineligible for grassland CRP.



## Who is Eligible?

To be eligible for grassland CRP, a producer must have owned or operated the land for at least 12 months prior to the end of this grassland CRP signup period, unless:

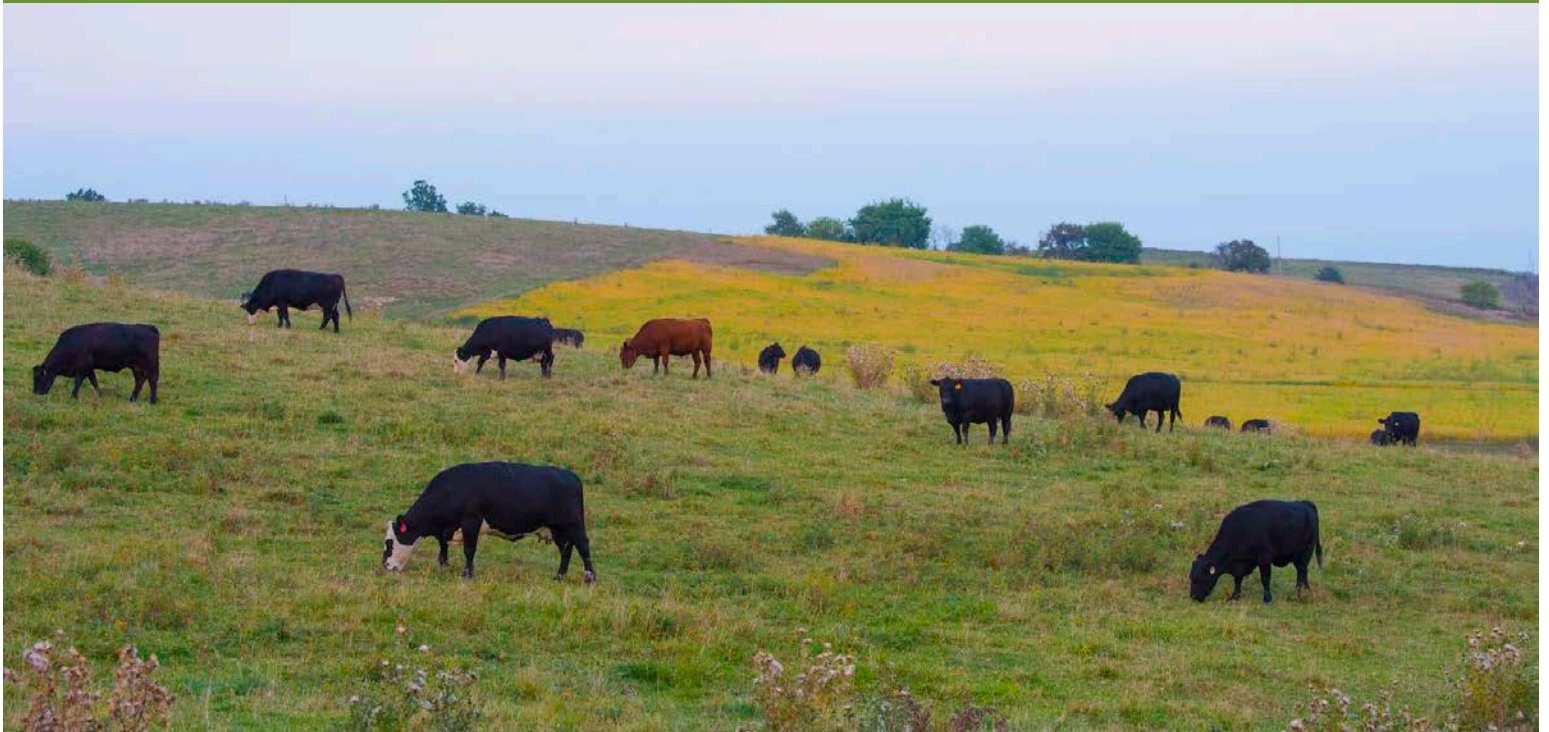
- ◆ The new owner acquired the land due to the previous owner's death;
- ◆ The ownership change occurred due to foreclosure where the owner exercised a timely right of redemption in accordance with state law or;
- ◆ The circumstance of the acquisition presents adequate assurance to FSA the new owner did not acquire the land for the purposes of placing it in CRP.



## More Information

For more information about FSA and its programs, visit [fsa.usda.gov](https://fsa.usda.gov) or your local FSA office.

To find your local FSA office, visit [farmers.gov/servicelocator](https://farmers.gov/servicelocator).



## Grassland CRP Payments?

FSA provides producer whose offers are selected for grassland CRP enrollment with annual rental payments and cost share assistance.

- ◆ **Rental Payments:** In return for implementing conservation measures into a haying, grazing, idle or wildlife habitat plan, FSA provides annual rental payments to participants. FSA bases rental rates on the value of the grazing land. County office staff works with the producers to calculate the maximum CRP rental rate for each offer. Producers may offer land below the maximum rate to increase the likelihood of their offer being accepted.
- ◆ **Cost-Share Assistance:** FSA provides cost share assistance to participants who install approved fencing or livestock watering facilities are needed to facilitate

grazing distribution. The cost share assistance cannot exceed 50 percent of the participant's costs to install approved infrastructure. Boundary fences are not eligible for cost share assistance.

Grassland CRP rental rates may be viewed in your local USDA Service Center or [online](#).

## Ranking Grassland CRP Offers

FSA will rank offers for grassland CRP enrollment according to several ranking factors. FSA collects data based on location of the offer and the operations and determines the environmental indices for the land offered. FSA ranks each eligible offer in comparison to all other offers and selects from that ranking. After enrollment period ends, the Secretary of Agriculture will decide where to make the ranking score cutoff. Those

who have met previous ranking score thresholds are not guaranteed a contract under this enrollment period. Producers may consult with local FSA and Natural Resource Conservation Service (NRCS) staff on how to maximize ranking scores and increase the likelihood that their offer will be accepted.

Grassland CRP permits producers to graze, harvest hay, and seed while receiving an annual rental payment for maintaining the existing permanent cover that is offered. Producers are required to maintain and complete any maintenance/enhancements needed on the grassland CRP. This includes any seeding of grasses or legumes along with applying applicable fertilizer and chemical applications. All activities are subject to a Conservation Plan, with certain restriction for haying during the primary nesting season.